



Trustee Recruitment Pack



**Thank you for taking the time to consider joining our
Board of Trustees!**

Contents

- **About Play Midlothian**
- **Our Services & Values**
- **Play Midlothian organisational structure**
- **Role Overview and skills sought**
- **Quotes from current board members/chair**
- **How to apply**

About Play Midlothian's

Play Midlothian is a leading charity dedicated to improving and enriching the lives of children and young people through the power of play. We believe that play is a fundamental right and an essential part of a child's development. Our services are designed to offer inclusive, safe, and stimulating environments where children can grow, learn, and have fun.

About Play Midlothian's board

The board is non-executive in its role, in that it is not involved in direct service delivery, rather it is there to review, guide, advise and oversee, ensuring that the staff team is performing well and is supported.

Our services



Enabling every child in Midlothian to thrive through play.

PLAY FOR ALL



Children age 0-13

- Free at home play sessions for disabled children and their families
- Weekly Mini & Mighty play sessions at One Dalkeith

PLAY IN MIND

Children age 7-12

- Support children's mental health through play in contact with nature.
- School sessions and out of school sessions available




OUT 2 PLAY

Children age 5-12

- Safe play in community settings (streets and urban greenspaces)
- Playworkers lead weekly sessions with fun outdoor kit (Woodburn/Dalkeith/Gorebridge & Mayfield)



More information about our services can be found on our Facebook page or website.

 @Playmidlothian
www.playmidlothian.org.uk

Our Values

Respectful

We recognise the strengths of our service users and colleagues, and support them to build on these. We listen to and are careful with the feelings and opinions of others. A deep respect for children's play drives us to achieve our goals.

With integrity

We stand up for what we believe in, even when that is difficult. Doing the right thing is our top priority in all aspects of our work. We are committed to being effective and making a difference to children's lives.

Creative

We trust in children's playfulness. We follow their lead in play and follow their example in our work. We are open to new ways of thinking and doing. We recognise that having a go and embracing challenge is part of learning and growth.

Inclusive

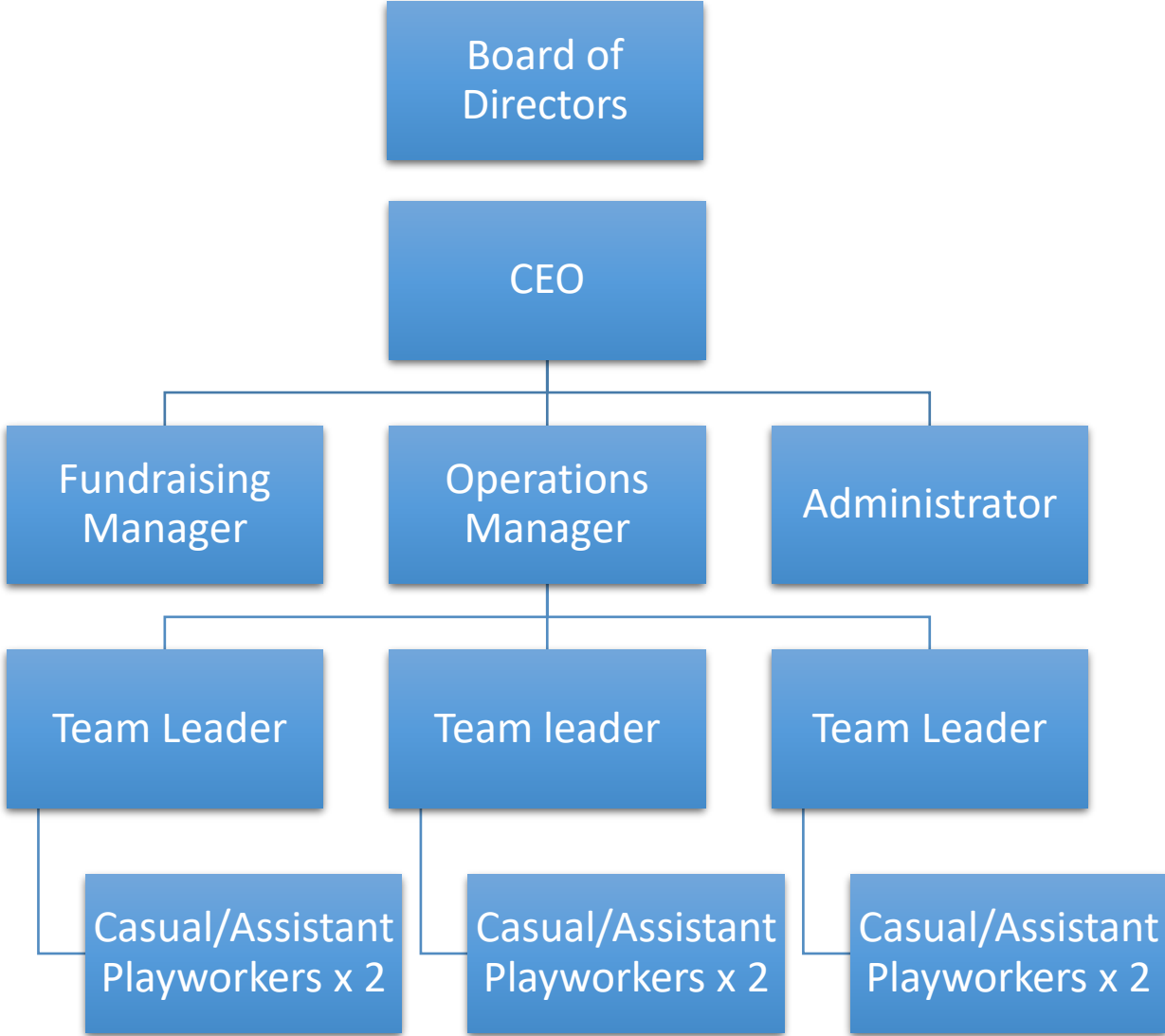
We approach others with kindness and understanding. We recognise and support differing needs and preferences. Listening to children and their families is integral to how we work. We strive to facilitate supportive networks.

For more information about Play Midlothian please visit www.playmidlothian.org.uk.



HELPING CHILDREN THRIVE THROUGH PLAY

Organisational Structure



Role Overview and skills sought

We are seeking an experienced and passionate individuals to join our team This is a unique opportunity to play a pivotal role in shaping the strategic direction of Play Midlothian and to contribute to the positive impact we have on the community.

“I have been a trustee for Play Midlothian for the past four years, being on the board for a small charity gives great opportunity to support across a wide variety of areas and benefits from lots of skill sets which means every member of the board is really valued. Play Midlothian delivers services that make a real difference in the lives of children, young people and families through facilitating the play they need to thrive. There is no time where this has been more important to improve children outcomes, if you have a passion to support our work we would love to hear from you.”

Laura Martin, Chair 01.05.20-04.12.23 and Trustee 04.12.23-present day

Chair - Person Specification

- **Leadership:** Provide strategic leadership and direction to the Board of Trustees, ensuring the charity achieves its mission and objectives.
- **Governance:** Ensure that Play Midlothian complies with its governing documents and other relevant legislation and regulations.
- **Strategic:** Plays a key role in setting the strategic direction.
- **Advocacy:** Act as an ambassador for Play Midlothian, enhancing its public profile and fostering relationships with key stakeholders, funders, and partners.
- **Collaboration:** Work closely with the Chief Executive and Board members to ensure effective governance and operational efficiency.
- **Financial:** Develop, review and approve budgets and income generation strategy to ensure sustainability.
- **Development:** Support the ongoing development of the Board, ensuring that it remains effective, diverse, and representative of the communities we serve. Leads the board in developing and reviewing policies in line with missions and strategic goals.

The ideal candidate will have:

- **Experience:** Proven experience in a leadership role within the charitable, public, or private sectors.
- **Knowledge:** A strong understanding of the challenges and opportunities within the charitable sector, particularly related to children’s services and play.
- **Skills:** Excellent communication, negotiation, change management and interpersonal skills, with the ability to inspire and motivate others.
- **Commitment:** A genuine passion for the mission of Play Midlothian and a commitment to improving the lives of children and young people.
- **Network:** Strong connections within the community and an ability to leverage these to benefit the charity.

Trustee - Person Specification

- **Leadership:** Provides input and support to the board's leadership.
- **Governance:** Supports the Chair and other trustees with its governance, legislation and regulations.
- **Strategic:** Contributes to the strategic direction.
- **Advocacy:** Represents the organisation in specific contexts.
- **Collaboration:** Provides support to the CEO and staff in specific areas.
- **Financial** Budget approval and financial monitoring.
- **Development:** Help define and set the long-term vision and strategic direction. Reviewing policies to ensure they align with missions and goals.

The ideal candidate will have:

- **Experience:** Proven experience working/volunteering within the charitable, public, or private sectors.
- **Knowledge:** An understanding of the challenges and opportunities within the charitable sector and knowledge of Play Midlothian's mission and values.
- **Skills:** Excellent communication and interpersonal skills. Ability to work collaboratively with other trustees and management.
- **Commitment:** Passionate about the voluntary sector and committed to improving the lives of children and young people.
- **Network:** Ability to represent the organisation positively and manage its reputation through effective networking and public relations.

What We Offer

- The opportunity to make a meaningful difference in the lives of children and young people;
- A supportive and collaborative environment with dedicated staff and trustees;
- Trustees will receive an induction to Play Midlothian, what we do, how we work and the role of the trustees and Board;
- Opportunities for personal and professional development with access to training on the role of charity trustees and other topics;
- Opportunities to engage with the work through work shadowing and connecting with specific teams or areas;
- Reimbursement of out-of-pocket expenses related to Board duties.

Commitment to Diversity

Play Midlothian is committed to building a diverse and inclusive Board that reflects the communities we serve. We welcome applications from all backgrounds and communities and are particularly keen to encourage those from underrepresented groups.

Time commitment

As stated in the advert.

PVG

As Play Midlothian is a children's charity, trustees must be PVG checked before they commence their role. If you are not already a member of the PVG scheme, you will need to join (which Play Midlothian will administer and there will be no cost).

How to Apply

Please submit your CV along with cover letter outlining the skills and the experience you would contribute to Play Midlothian and include the names of two referees.

We would also love to know what you would like to personally gain from this role.

Please email hayley@playmidlothian.org.uk.

For an informal discussion about the role, please contact sarah@playmidlothian.org.uk.

Thank you for your interest – we hope to hear from you soon about how you can help us to support children in Midlothian to thrive through play!